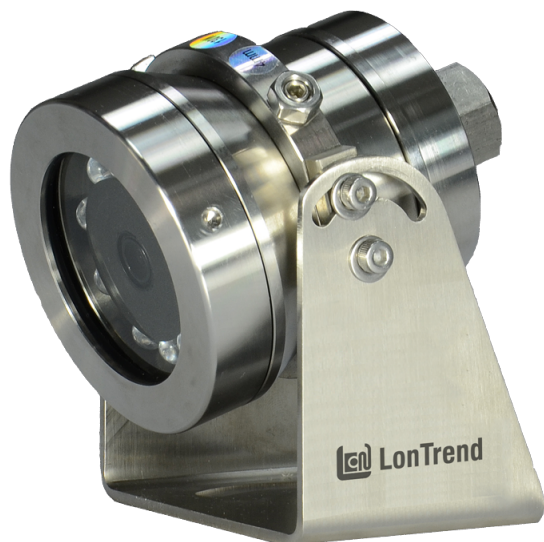


# LTCN06

## Network Explosion Proof Mobile Bullet Camera



<b>Model</b>	<b>LTCN06</b>
<b>Light On/Off</b>	On when illumination is lower than 10 lux
<b>Atmospheric Pressure</b>	80 kPa to 106 kPa
<b>Operating Ambient Temperature</b>	-30 °C to 70 °C (-22 °F to 158 °F)
<b>Relative Humidity</b>	5 % to 95 % noncondensing
<b>Input Power</b>	12 V DC/PoE
<b>Power</b>	24 W
<b>Consumption</b>	
<b>Dimensions (L × W × H)</b>	90 mm × 84 mm × 105 mm (3.54 in × 3.31 in × 4.13 in)
<b>Weight</b>	1.2 kg (2.65 lb)

\*Design and specifications are subject to change without prior notice.

### Features

- 1/2.7-inch progressive scan CMOS
- IP68, NEMA-6P enclosure rating
- Ex d IIC T6 Gb explosion-proof marking
- Built-in IR illuminator with distance up to 15 m (59.2 ft)
- Operating temperature range from -30 °C to 70 °C (-22 °F to 158 °F)
- 2 MP, 5 MP available
- f = 4 mm, 6 mm lens optional

### Tech Specs

<b>Model</b>	LTCN06
<b>Type</b>	Bullet camera
<b>Protection Rating</b>	<ul style="list-style-type: none"> <li>• Ex d IIC T6 Gb explosion-proof marking</li> <li>• IP68, NEMA-6P enclosure rating</li> </ul>
<b>Material</b>	AISI 304 stainless steel
<b>Image Sensor</b>	1/2.7-inch progressive scan CMOS
<b>Lens</b>	f = 4 mm (6 mm optional)
<b>Effective Pixels</b>	2 MP (LTCN06), 5 MP (LTCN06-5M)
<b>Minimum Illumination</b>	0 lux with IR on
<b>Electronic Shutter Range</b>	1/25 to 1/10,000 second
<b>Certifications</b>	CE, CNEX
<b>Wavelength</b>	850 nm
<b>Illumination Distance</b>	15 m (59.2 ft)
<b>Beam Angle</b>	-
<b>LEDs</b>	10 pieces
<b>LED Lifetime</b>	20,000 hours