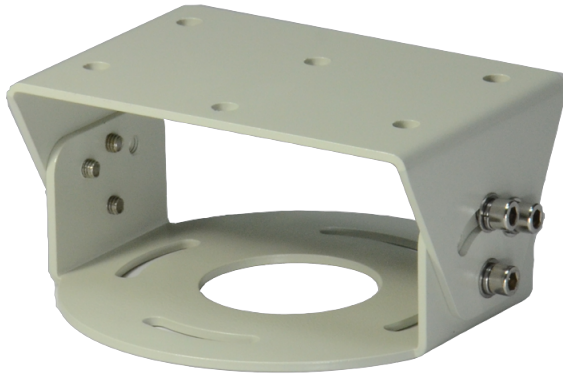


LTMH33

Rotating Bracket



Tech Specs

Model	LTMH33
Maximum Load	5 kg (11.0 lb)
Material	Die-cast aluminum
Finish	Beige polyester powder coat
Dimensions (W × H × L)	142 mm × 68 mm × 140 mm (5.6 in × 2.7 in × 5.5 in)
Weight	0.9 kg (2.0 lb)
Related Products	<ul style="list-style-type: none"> • Top: LTEG05L, LTEG05XL, LTEG07 • Bottom: LTMP03

*Design and specifications are subject to change without prior notice.