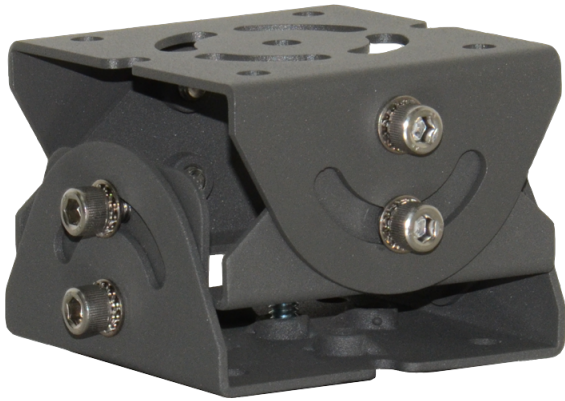


# LTMH46

## 3 Axis Rotating Bracket



### Available Models

Model	Fix Type
LTMH46	Screws
LTMH46-M	Magnets

### Tech Specs

Model	LTMH46
Maximum Load	5 kg (11.0 lb)
Material	AISI 304 stainless steel
Finish	Gray polyester powder coat
Dimensions (W × H × L)	<ul style="list-style-type: none"> <li>101 mm × 64 mm × 103 mm (4.0 in × 2.5 in × 4.1 in) (LTMH46)</li> <li>101 mm × 72 mm × 103 mm (4.0 in × 2.8 in × 4.1 in) (LTMH46-M)</li> </ul>
Weight	<ul style="list-style-type: none"> <li>0.6 kg (1.3 lb) (LTMH46)</li> <li>0.8 kg (1.8 lb) (LTMH46-M)</li> </ul>
Related Products	LTES20

\*Design and specifications are subject to change without prior notice.