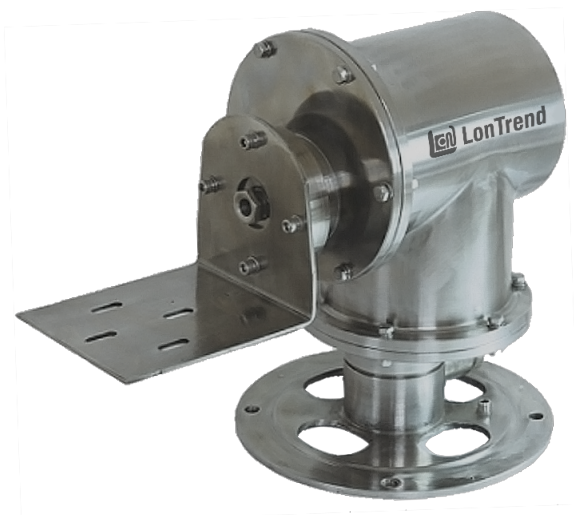


# LTPX01

Explosion Proof Pan and Tilt Unit for Loads up to 20 kg (44.1 lb)



<b>Model</b>	<b>LTPX01</b>
<b>Relative Humidity</b>	5 % to 95 % noncondensing
<b>Communication</b>	RS-485
<b>Protocols</b>	Pelco-D, Pelco-P
<b>Communication Speed</b>	2,400 bps, 4,800 bps, 9,600 bps, 19,200 bps adjustable
<b>Dimensions (W × H × L)</b>	300 mm × 280 mm × 380 mm (11.81 in × 11.02 in × 14.96 in)
<b>Weight</b>	21.4 kg (47.18 lb)
<b>Note</b>	-

\*Design and specifications are subject to change without prior notice.

## Features

- IP66, NEMA-4X enclosure rating
- Ex d IIC T6 Gb explosion-proof marking
- Maximum load 20 kg (44.1 lb)

## Tech Specs

<b>Model</b>	LTPX01
<b>Maximum Load</b>	20 kg (44.1 lb)
<b>Type</b>	Indoor/Outdoor, side load
<b>Protection Rating</b>	<ul style="list-style-type: none"> <li>▪ IP66, NEMA-4X enclosure rating</li> <li>▪ Ex d IIC T6 Gb explosion-proof marking</li> </ul>
<b>Material</b>	SS304
<b>Finish</b>	Stainless steel original color
<b>Input Power</b>	220 V AC/24 V AC
<b>Power Consumption</b>	25 W
<b>Pan Range (Movement in Horizontal Plane)</b>	0° to 350°
<b>Pan Speed</b>	3.8° per second
<b>Tilt Range (Movement in Vertical Plane)</b>	-90° to 90°
<b>Tilt Speed</b>	3.8° per second
<b>Accuracy</b>	0.2°
<b>Atmospheric Pressure</b>	80 kPa to 106 kPa
<b>Operating Ambient Temperature</b>	-45 °C to 60 °C (113 °F to 140 °F)