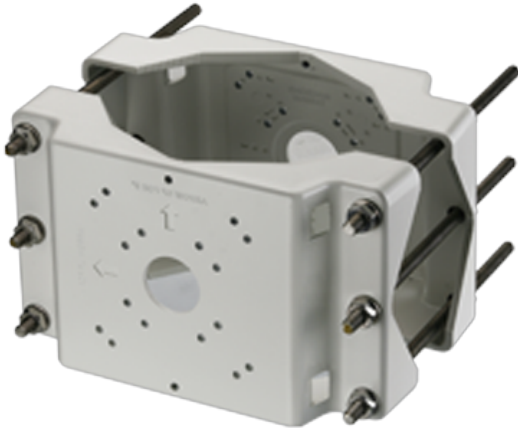


LTMH06

Soporte de montaje en poste

Soporte de lámpara para montaje en poste de luz (2 lado)



Tech Specs

Model	LTMH06
Maximum Load	30 kg (66.1 lb)
Material	Die-cast aluminum
Finish	White polyester powder coat
Suitable Pole Dimension (Ø)	70 mm to 120 mm (2.8 in to 4.7 in) or 130 mm to 230 mm (5.1 in to 9.1 in)
Dimensions (W × H × L)	277 mm × 75 mm × 168 mm (10.9 in × 3.0 in × 6.6 in)
Weight	2.4 kg (5.3 lb)
Note	-

*Design and specifications are subject to change without prior notice.