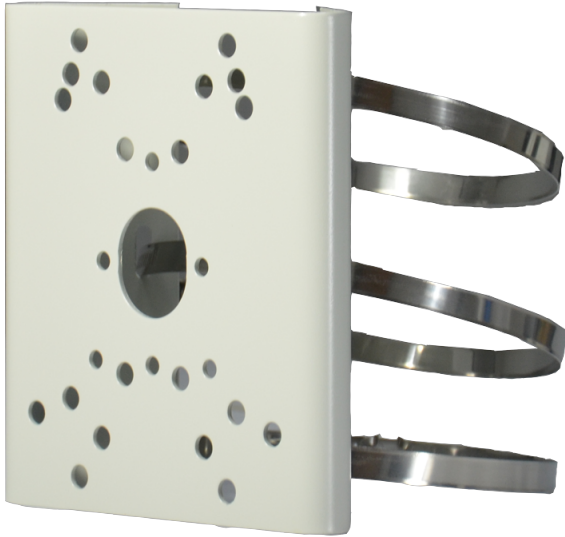


LTMH19

Soporte para montaje en poste

Soporte de montaje en poste (1 lado), de 18 cm a 20 cm



Tech Specs

Model	LTMH19
Maximum Load	-
Material	Steel, AISI 304 stainless steel
Finish	Beige polyester powder coat
Suitable Pole Dimension (Ø)	67 mm to 127 mm (2.6 in to 5.0 in) or 83 mm to 178 mm (3.3 in to 7.0 in)
Dimensions (W × H × L)	146 mm × 170 mm × 53 mm (5.7 in × 6.7 in × 2.1 in) without hoop ring
Weight	1.4 kg (3.1 lb)
Related Products	-

*Design and specifications are subject to change without prior notice.