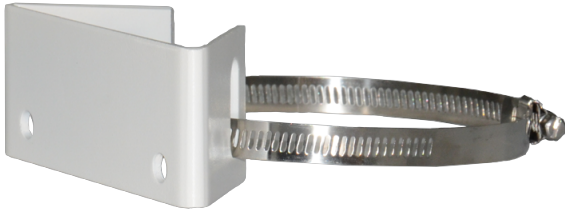


## LTMH24

### Soporte para montaje en poste

Soporte de montaje en poste (1 lado, 2 piezas), 18 cm a 20 cm



### Tech Specs

<b>Model</b>	LTMH24
<b>Maximum Load</b>	-
<b>Material</b>	Steel, AISI 304 stainless steel
<b>Finish</b>	White polyester powder coat
<b>Suitable Pole Dimension (Ø)</b>	105 mm to 145 mm (4.1 in to 5.7 in) or 152 mm to 191 mm (6.0 in to 7.5 in)
<b>Dimensions (W × H × L)</b>	48 mm × 42 mm × 123 mm (1.9 in × 1.7 in × 4.8 in) without hoop ring
<b>Weight</b>	0.6 kg (1.3 lb)
<b>Related Products</b>	-

\*Design and specifications are subject to change without prior notice.