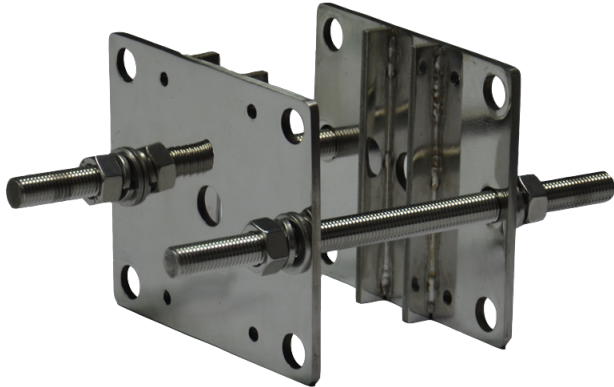


LTMH31

Soporte para montaje en poste

Soporte de montaje en poste (2 lados)



Available Models

Model	Material
LTMH31	AISI 304 stainless steel
LTMH31-L	AISI 316L stainless steel

Tech Specs

Model	LTMH31
Maximum Load	60 kg (132.3 lb)
Material	<ul style="list-style-type: none"> AISI 304 stainless steel (LTMH31) AISI 316L stainless steel (LTMH31-L)
Finish	White polyester powder coat
Suitable Pole Dimension (Ø)	130 mm to 230 mm (5.1 in to 9.1 in)
Dimensions (W × H × L)	160 mm × 140 mm × 40 mm (6.3 in × 5.5 in × 1.6 in)
Weight	3 kg (6.6 lb)
Note	-

*Design and specifications are subject to change without prior notice.