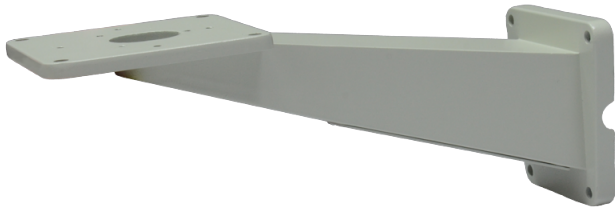


LTMP03

Soporte de montaje en la pared



Tech Specs

Model	LTMP03
Maximum Load	50 kg (110.2 lb)
Material	Die-cast aluminum
Finish	Beige polyester powder coat
Dimensions (W × H × L)	140 mm × 152 mm × 398mm (5.5 in × 6.0 in × 15.7 in)
Weight	1.9 kg (4.2 lb)
Related Products	LTPM03, LTPM04

*Design and specifications are subject to change without prior notice.