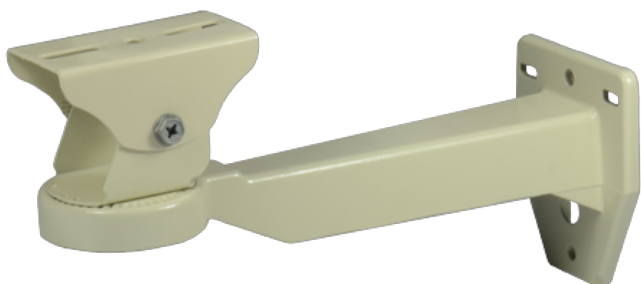


## LTMH32

Support mural pour caissons



### Tech Specs

|                               |  |
|-------------------------------|--|
| <b>Model</b>                  | LTMH32   |
| <b>Maximum Load</b>           | 5 kg (11.02 lb)  |
| <b>Material</b>               | Die-cast aluminum                                      |
| <b>Finish</b>                 | Beige polyester powder coat                            |
| <b>Dimensions (W × H × L)</b> | 83 mm × 145 mm × 255 mm (3.27 in × 5.71 in × 10.04 in) |
| <b>Weight</b>                 | 0.55 kg (0.88 lb)                                      |
| <b>Related Products</b>       | -  |

\*Design and specifications are subject to change without prior notice.