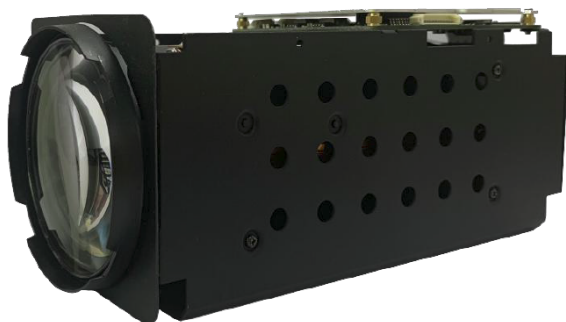


LTCN10

Módulo de câmera com zoom (2 MP, 60 fps, 44X)



Model	LTCN10
Frame Rate	60 frames per second (1080p)
WhiteBalance	Auto/indoor/outdoor/OPW/ATW/manual
Auto gain	Auto/Manual
PTZ Control Protocol	40 types of control protocol including Pelco D/Pelco P
Certifications	ONVIF, PSIA
Operating Ambient Temperature	-10 °C to 50 °C (14 °F to 122 °F)
Relative Humidity	5 % to 95 % noncondensing
Input Power	12 V DC
Power	13.6 W maximum
Consumption	
Dimensions (W x H x L)	73 mm x 77 mm x 174 mm (2.9 in x 3.0 in x 6.9 in)
Weight	724 g (1.6 lb)

*Design and specifications are subject to change without prior notice.

Features

- 1/2-inch CMOS
- 0.07 lux minimum illumination in black and white mode
- H.265/H.264/MJPEG compression
- 60 frame per second at 1920 x 1080
- 2-way audio
- Operating temperature range from -10 °C to 50 °C (14 °F to 122 °F)
- ONVIF compliant

Tech Specs

Model	LTCN10
Type	Network camera module
Image Sensor	1/2-inch CMOS
Lens	f = 6.3 mm to 278 mm (44X), F/1.4 to F/5.0, auto focus, auto iris
Digital Zoom	16X
View of Angle	61.6° (wide) to 1.9° (tele)
Effective Pixels	1920 x 1080
Minimum Illumination	<ul style="list-style-type: none"> ▪ Color: 0.07 lux at (F/1.4, AGC on) ▪ Day and Night: 0.0025 lux at (AGC on)
Electronic Shutter Range	1/1 to 1/100,000 second
Wide Dynamic Range (WDR)	3D
Digital Noise Reduction (DNR)	0 to 5, total 6 steps
Video Compression	H.265/H.264/MJPEG
Audio Compression	G.711/AAC