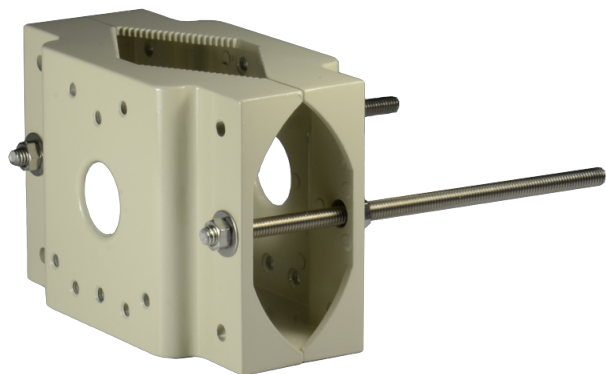


LTMH03

Suporte para montagem em poste

Suporte para montagem de postes de lâmpadas (2 lado)



Tech Specs

Model	LTMH03
Maximum Load	20 kg (44.1 lb)
Material	Die-cast aluminum
Finish	Beige polyester powder coat
Suitable Pole Dimension (Ø)	90 mm to 140 mm (3.5 in to 5.5 in)
Dimensions (W x H x L)	182 mm x 45 mm x 114 mm (7.2 in x 1.8 in x 4.5 in)
Weight	1.3 kg (2.9 lb)
Related Products	-

*Design and specifications are subject to change without prior notice.