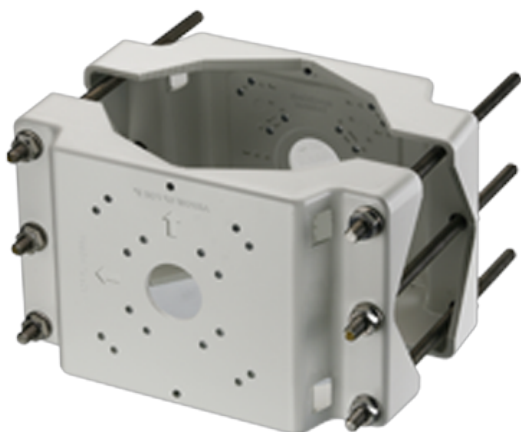


LTMH06

Suporte para montagem em poste

Suporte para montagem de postes de lâmpadas (2 lado)



Tech Specs

Model	LTMH06
Maximum Load	30 kg (66.1 lb)
Material	Die-cast aluminum
Finish	White polyester powder coat
Suitable Pole	70 mm to 120 mm (2.8 in to 4.7 in) or 130 mm to 230 mm
Dimension (Ø)	mm (5.1 in to 9.1 in)
Dimensions (W x H x L)	277 mm x 75 mm x 168 mm (10.9 in x 3.0 in x 6.6 in)
Weight	2.4 kg (5.3 lb)
Note	-

*Design and specifications are subject to change without prior notice.