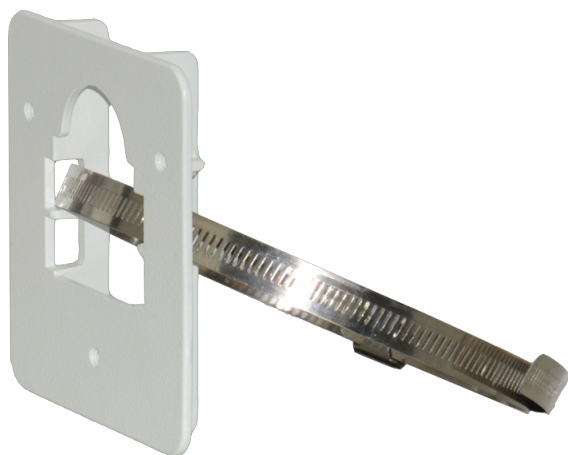


LTMH09

Suporte para montagem em poste

Suporte para montagem em poste (1 lado)



Tech Specs

Model	LTMH09
Maximum Load	35 kg (77.2 lb)
Material	Die-cast aluminum
Finish	White polyester powder coat
Suitable Pole Dimension (Ø)	83 mm to 180 mm (3.3 in to 7.1 in)
Dimensions (W x H x L)	110 mm x 120 mm x 20 mm (4.3 in x 4.7 in x 0.8 in)
Weight	0.3 kg (0.7 lb)
Note	-

*Design and specifications are subject to change without prior notice.