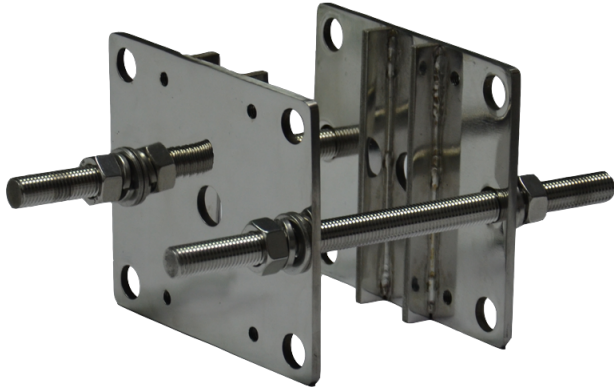


LTMH31

Suporte para montagem em poste

Suporte para montagem em poste (2 lados)



Available Models

Model	Material
LTMH31	AISI 304 stainless steel
LTMH31-L	AISI 316L stainless steel

Tech Specs

Model	LTMH31
Maximum Load	60 kg (132.3 lb)
Material	<ul style="list-style-type: none"> AISI 304 stainless steel (LTMH31) AISI 316L stainless steel (LTMH31-L)
Finish	White polyester powder coat
Suitable Pole	130 mm to 230 mm (5.1 in to 9.1 in)
Dimension (Ø)	
Dimensions (W x H x L)	160 mm x 140 mm x 40 mm (6.3 in x 5.5 in x 1.6 in)
Weight	3 kg (6.6 lb)
Note	-

*Design and specifications are subject to change without prior notice.