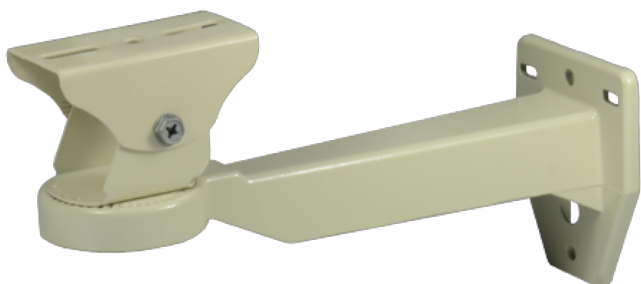


LTMH32

Suporte de parede para carcaça



Tech Specs

Model	LTMH32
Maximum Load	5 kg (11.02 lb)
Material	Die-cast aluminum
Finish	Beige polyester powder coat
Dimensions (W x H x L)	83 mm x 145 mm x 255 mm (3.27 in x 5.71 in x 10.04 in)
Weight	0.55 kg (0.88 lb)
Related Products	-

*Design and specifications are subject to change without prior notice.