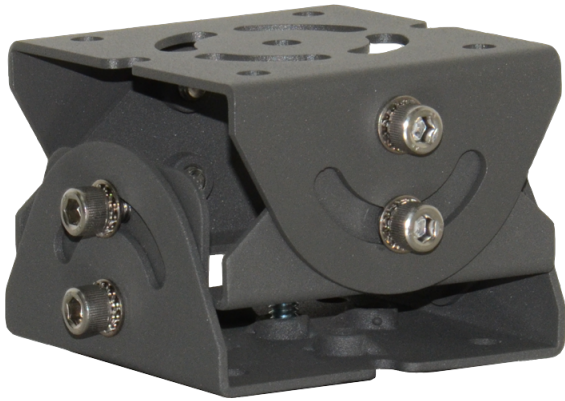


LTMH46

3 Axis Rotating Bracket



Available Models

Model	Fix Type
LTMH46	Screws
LTMH46-M	Magnets

Tech Specs

Model	LTMH46
Maximum Load	5 kg (11.0 lb)
Material	AISI 304 stainless steel
Finish	Gray polyester powder coat
Dimensions (W x H x L)	<ul style="list-style-type: none"> • 101 mm x 64 mm x 103 mm (4.0 in x 2.5 in x 4.1 in) (LTMH46) • 101 mm x 72 mm x 103 mm (4.0 in x 2.8 in x 4.1 in) (LTMH46-M)
Weight	<ul style="list-style-type: none"> • 0.6 kg (1.3 lb) (LTMH46) • 0.8 kg (1.8 lb) (LTMH46-M)
Related Products	LTES20

*Design and specifications are subject to change without prior notice.