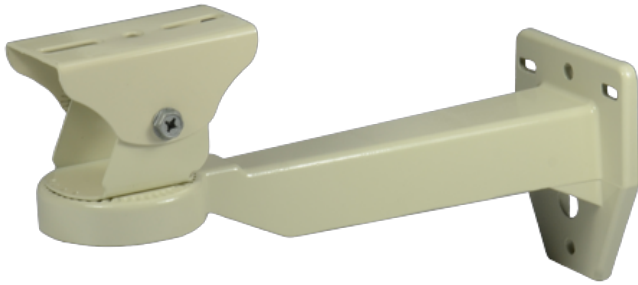


LTMH32 Wall Housing Bracket



Tech Specs

Model	LTMH32
Maximum Load	5 kg (11.02 lb)
Material	Die-cast aluminum
Finish	Beige polyester powder coat
Dimensions (W × H × L)	83 mm × 145 mm × 255 mm (3.27 in × 5.71 in × 10.04 in)
Weight	0.55 kg (0.88 lb)
Related Products	-

*Design and specifications are subject to change without prior notice.