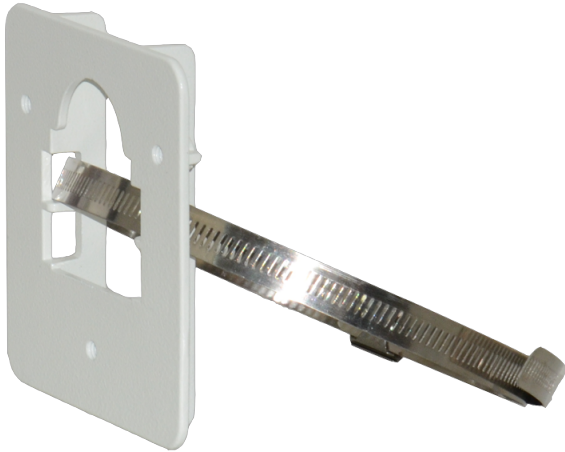


## LTMH09

### Giá l?p ??t cho c?t

Giá l?p ??t cho c?t ( 1 bên)



### Tech Specs

<b>Model</b>	LTMH09
<b>Maximum Load</b>	35 kg (77.2 lb)
<b>Material</b>	Die-cast aluminum
<b>Finish</b>	White polyester powder coat
<b>Suitable Pole Dimension (Ø)</b>	83 mm to 180 mm (3.3 in to 7.1 in)
<b>Dimensions (W x H x L)</b>	110 mm x 120 mm x 20 mm (4.3 in x 4.7 in x 0.8 in)
<b>Weight</b>	0.3 kg (0.7 lb)
<b>Note</b>	-

\*Design and specifications are subject to change without prior notice.